



WS-5 SERIES

Active All in One P.A. System

Features

- 80W Class-D amplification
- 5.25" full range transducer
- Rechargeable Battery Pack
- 106 dB SPL
- Bluetooth & media player
- UHF receiver (WS-5MU1)
- 3 inputs mixer

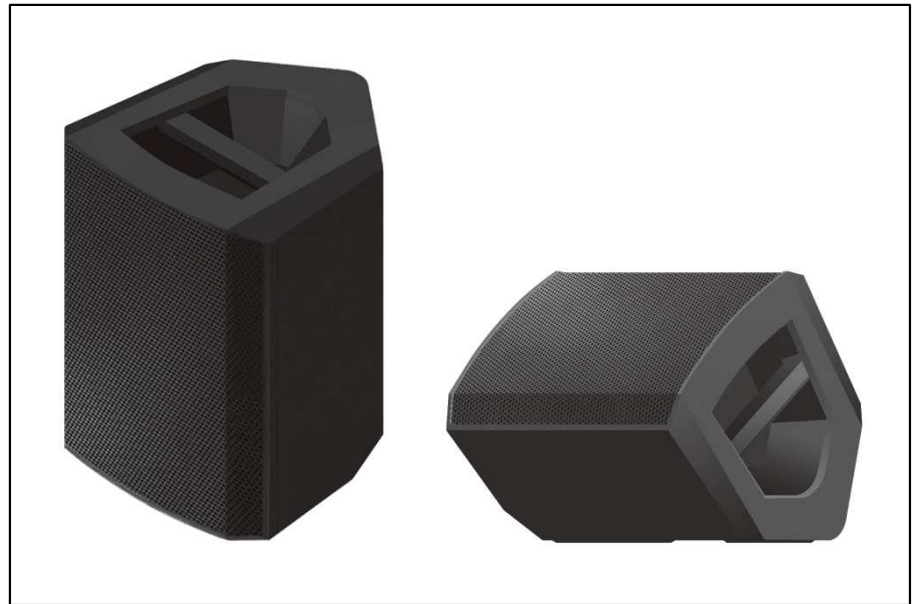
WS-5 Series features two models of all in one P.A. system dedicated to mobile applications, like teaching or outdoor events including street music, sport competitions and private parties.

Both models are battery powered and feature two MIC/Line plus one auxiliary stereo-summed inputs.

WS-5MU1 features an additional wireless UHF receiver to be used with WT-H, WT-L, and WT-X Mic transceivers.

A built-in media module is available including MP3 USB/SD/Bluetooth player.

The speaker system delivers 80W RMS using a Class-D amplifier to drive the 5.25" transducer. The battery is made of lithium-ion cells for a longer life and lighter weight. The cabinet is made of strong plastic and features a handle for transport. It is a trapezoidal shape, so it can be positioned as a stage monitor with 2 different positions. It can also be mounted on a floor stand for better coverage. A strong metal grille protects the transducers from shocks.



Specifications

MODEL	WS-5 / WS-5MU1
Power Supply	AC:115-120V / 220- 240 V Rechargeable lithium-ion battery (24 hours operation) DC 15V
Transducer	5.25"
Frequency Response	100 Hz-18kHz (+/- 3dB)
Max SPL	106dB Max
Power Output	80W (Program) Class-D
Equalizer Controls	BASS: +/-10dB TREBLE: +/-10dB CH1, CH2, AUX Volume
External Controls	Master Volume Bass, Treble ON/OFF switch
Indicators	Signal/Clip, Battery recharge, Power
Wireless UHF receiver	1 channel UHF non-diversity, PLL synthesized (WS-5MU1)
Source Player	Bluetooth & MP3 USB/SD
Enclosure Construction	Plastic cabinet; Trapezoidal; Metal grille; Handle
Mounting	25mm standard pole-mount
Dimension (W x D x H)	192 x 211 x 257.5 mm
Weight	5 kg

MODEL	WT-H Handled Mic Transmitter	WT-X Handled Mic Transmitter	WT-L Pocket Transmitter
Channel	Multi-channel, up to 16 frequency presets for each frequency band		
Frequency Band	470 ~ 960 MHz Dependent on applicable country regulation		
Oscillation mode	PLL UHF Synthesized		
Modulation Mode	FM (F3E)		
Frequency Stability	+/- 0.005% (-10° ~ 50°C)		
RF output power	10mW		
Spurious Emission	50dBm		
THD	< 0.8% (1kHz)		
Frequency Response	50Hz-12kHz (+/- 3dB)	100Hz-12kHz (+/- 3dB)	50Hz-12kHz (+/- 3dB)
Current drain	<130mA		
Battery	"AA" type x 2 pcs (6 hours use)	"AA" type x 1 pc (4 hours use)	"AA" type x 2 pcs (6 hours use)
Operating Temperature	-10°C to 50°C		
Tone key Frequency	30kHz		
Dimension (W x D x H)	48 (diam.) x 245 mm	20 (diam.) x 150 mm	65 x 85 x 25 mm
Weight	0.2 kg	0.033 kg	0.082 kg
Dynamic	> 100dB		
Mic / Instrument Input	Max 10dBu		
Microphone Type	Dynamic Capsule	Condenser Capsule	Input: Dynamic Mic Condenser Mic./ Elec. Instrument
4 pin Connector	N/A		Pin 1: GND Pin 2: Phantom Pin 3: Instrument Pin 4: Microphone

MODEL	WM-X Wired Microphone
Type	Moving coil dynamic microphone
Characteristics	Uni-directional
Impedance	350 Ohms +/- 30% at 1kHz
Sensitivity	-74dB +/- 3dB at 1kHz
Frequency Response	70 Hz-14kHz
Cable	5.5mm x 15 feet with 6.3 mm phone plug
Weight	0.310 kg without cable and box

Specifications subject to modification without notice